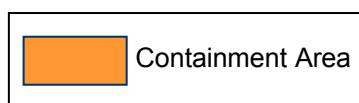
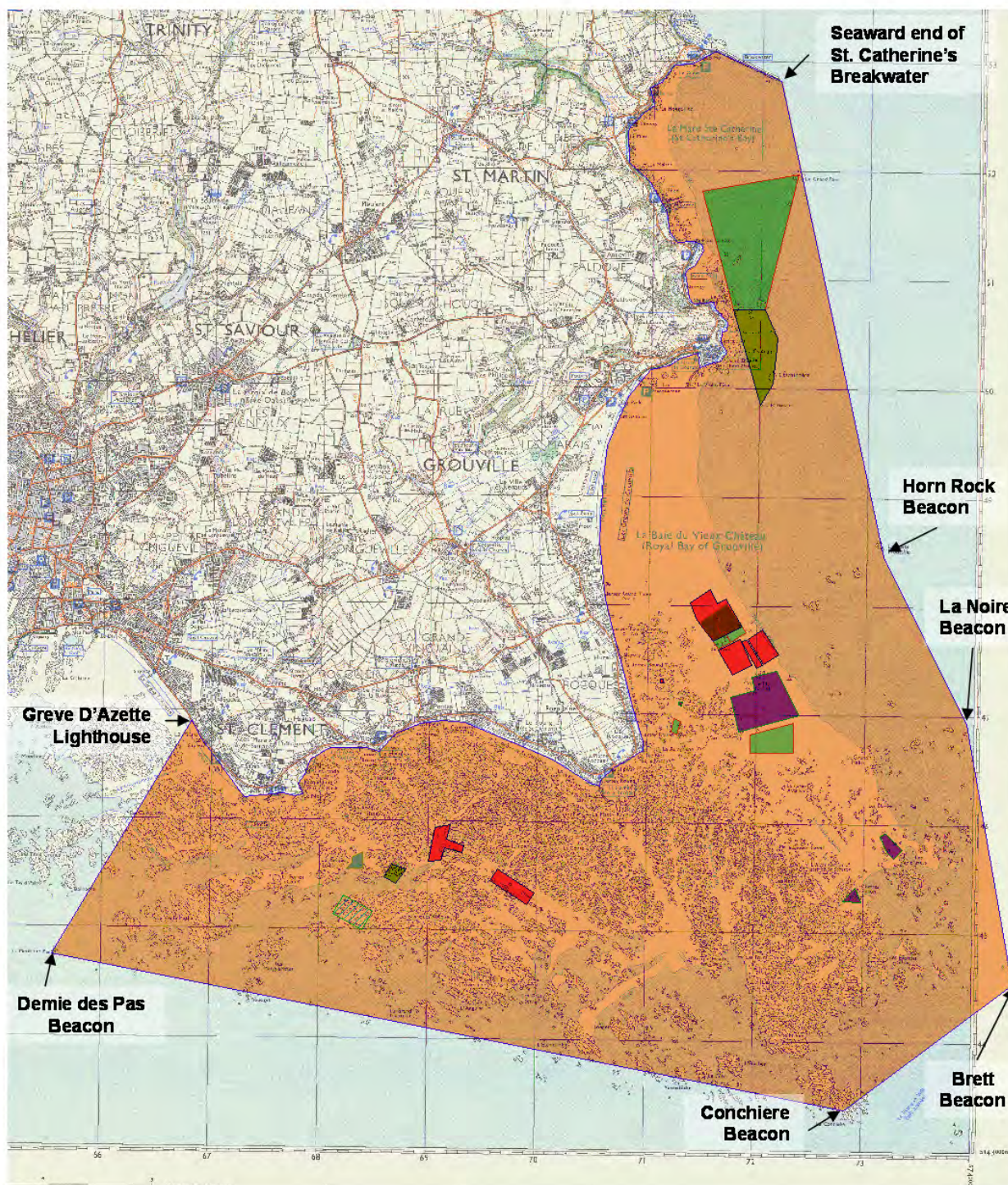


Jersey Containment Area

Following confirmation of Oyster herpes virus (OshV-1 μ var) in oyster farms in Jersey, a containment area was established on 28th July 2010. The map shows the containment area and boundary.



Produced by the Environment Division
Planning and Environment Department
Howard Davis Farm, La Route de la Trinite, Trinity, Jersey,
Channel Islands. JE3 5JP. Tel: +44 (0)1534 441600

States
of Jersey